

# GIGANTIC SCREW MACHINE AUCTION

60 ACME GRIDLEYS • 10 BROTHER CNC DRILL & TAP CENTERS • TOOLING



On the Premises of:

**Gonzalez Group, LLC**

935 Anderson Rd. Litchfield, Michigan 49252

**Onsite & Webcast Auction**

**SALE DATE: Wednesday, October 19, 2016 10:00 am EDT**

**INSPECTION: Tuesday, October 18 8:00 am - 5:00pm EDT**



**13  
8-Spindle  
Acmes**



**47  
6-Spindle  
Acmes**



**10  
Brother  
Drill/Tap**



**150,000 lbs.  
Bar Stock**



**4  
Omniturn  
Lathes**



**(60) Acme Gridley 6-Spindle & 8-Spindle Automatics • (6) 3/4" Davenport Automatics  
(10) Brother CNC Drill & Tap Centers with Pallet Changers • Intersource Chip System  
(4) Omniturn GT-75 CNC Gang Turn Lathes (one New 2011) • Broaches • Toolroom Equipment  
Inspection Equipment • 3-Stage Stainless Steel Rotating Basket Parts Washer • Material Handling  
Approx. 150,000 lbs. of Raw Material Bar Stock • Large Quantity of Screw Machine Tooling  
Thread Rollers • Shave Tools • Watkins Saws • Cams • Gears • MORE!**

Register &  
Bid Online at:

**BidSpotter.com**

Buyer's Premium 15% Onsite, 18% Online

**Need an Auction? Consignment or Cash Buyout**

Contact Glenn at 312-280-1234 or [info@premierarg.com](mailto:info@premierarg.com)

**PREMIER**  
Asset Recovery Group, LLC  
[www.premierarg.com](http://www.premierarg.com)

**BIDITUP**  
BIDITUP AUCTIONS WORLDWIDE  
AN INDUSTRIAL ASSETS COMPANY  
[www.biditup.com](http://www.biditup.com)

**Maynards**  
SINCE 1902  
AUCTIONS | LIQUIDATIONS | APPRAISALS  
[www.maynards.com](http://www.maynards.com)

# ACME GRIDLEY AUTOMATIC SCREW MACHINES

Qty.	Size & Model	Spindles	Options	Serial Number
1	2-5/8" RB-8	8-Spindle	Pick-off, Back Finishing, Acc. Reaming	96406
2	2-5/8" RB-8	8-Spindle	Univ. Threading, Acc. Reaming, Logan	96137, 96188
2	1-5/8" RB-8	8-Spindle	Univ. Threading, Acc. Reaming	85248, 85223
2	1-1/4" RB-8	8-Spindle	Univ. Threading, Pick-off, Back Finishing	AM40818, AM40137
2	1-1/4" RB-8	8-Spindle	Pick-off, Back Finishing	AM40745, AM40086
1	1-1/4" RB-8	8-Spindle	Univ. Threading	AM40108
1	1-1/4" RB-8	8-Spindle	Rotary Slide Attach., Acro Barfeed	AM40224
1	3/4" RA-8	8-Spindle	Univ. Threading, Acc. Reaming	BD70312
1	3/4" RA-8	8-Spindle	Pick-off, Back Finishing	BD70054
1	4" RB-6	6-Spindle	Acc. Reaming	BA92259
1	3-1/2" RB-6	6-Spindle	Univ. Threading, Acc. Reaming	94409
1	2-5/8" RA-6	6-Spindle	Univ. Threading, Acc. Reaming, Logan	84769A
1	2-5/8" RA-6	6-Spindle	Univ. Threading, Acc. Reaming	84239
1	2-5/8" RA-6	6-Spindle	Acc. Reaming	84288
1	2-5/8" RB-6	6-Spindle	Univ. Threading, Acc. Reaming, Logan	84908
1	2-5/8" RB-6	6-Spindle	Acc. Reaming	84884
1	1-5/8" RA-6	6-Spindle	Univ. Threading, Pick-off, Back Finishing	40779
1	1-1/4" RA-6	6-Spindle	Univ. Threading, Pick-off, Back Finishing, Logan, Radial Slides	71225C
6	1-1/4" RA-6	6-Spindle	Univ. Threading, Pick-off, Back Finishing	71952B, 71636B, 71296B, 71998, 71392, 70651
1	1-1/4" RA-6	6-Spindle	Pick-off, Back Finishing	71182C
1	1-1/4" RA-6	6-Spindle	Pick-off, Back Finishing, Threading	71167B
2	1-1/4" RA-6	6-Spindle	Univ. Threading, Acc. Reaming	70439, 71911
3	1-1/4" RA-6	6-Spindle	Acc. Reaming	71718, 71701, 71443
1	1-1/4" RA-6	6-Spindle		70289
2	1-1/4" RA-6	6-Spindle	Watkins Cut-off Saw (sold separately)	70745, N/A
7	1-1/4" RA-6	6-Spindle	Universal	71485, 71369, 70950, 70600, 70463, 70369, 71354A
5	1" RA-6	6-Spindle	Univ. Threading, Pick-off, Back Finishing	23026, 23151A, 23346, A23106, 23490
1	1" RA-6	6-Spindle	Acc. Reaming	A23688
2	1" RA-6	6-Spindle	Pick-off, Back Finishing	23423, 23329AM
1	1" RA-6	6-Spindle	Univ. Threading, Acc. Reaming	23993
2	9/16" RA-6	6-Spindle	Univ. Threading, Pick-off, Back Finishing	23222, 22972A
4	9/16" RA-6	6-Spindle	Pick-off, Back Finishing	23084, A23228, 22863A, 22408
1	1-5/8" RB-6	6-Spindle Collet Chucker		41779

## DAVENPORT AUTOMATIC SCREW MACHINES

Qty.	Size	Spindles	Options	Serial Number
1	3/4"	5-Spindle	Spindle Stopping, Pick-off	13646
1	3/4"	5-Spindle	Spindle Stopping, Threading, Pick-off	10067
3	3/4"	5-Spindle	Threading, Pick-off	7811, 6827, 6308
1	3/4"	5-Spindle	Pick-off	6444

## SCREW MACHINE TOOLING

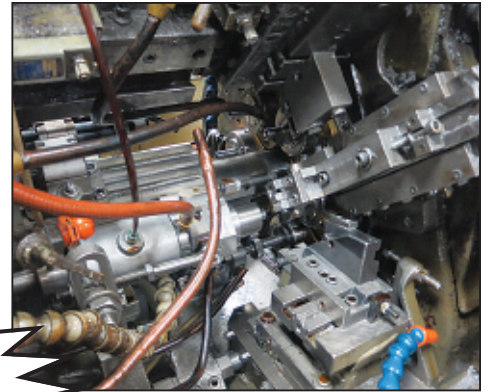
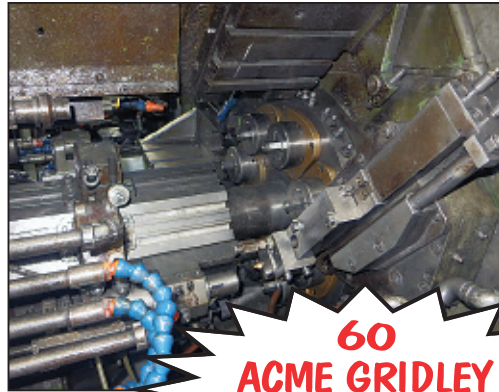
### Huge Quantities of Screw Machine Tooling:

Winter, Salvo & Reed Thread Rollers, Peterson, Empire & Other Shave Tool Recess Tools, Holders, Double Deckers, Collets, Cams, Gears, Collet Holders, Back Finishing Slides, Timken Bearings, etc.

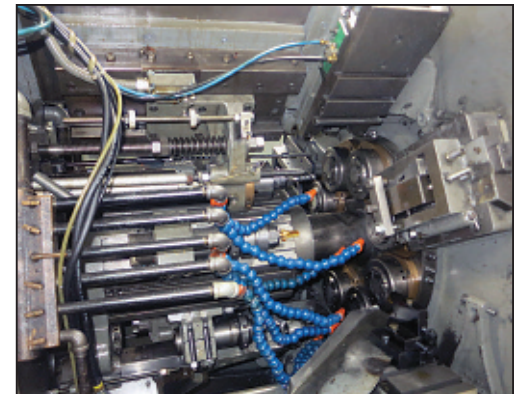
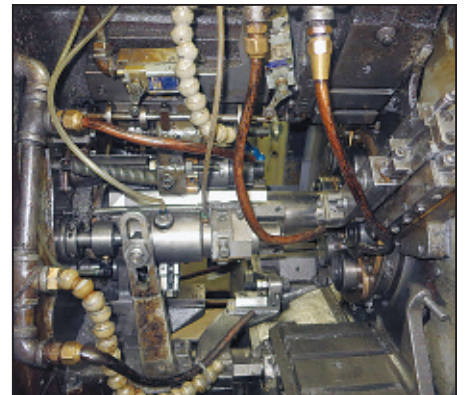
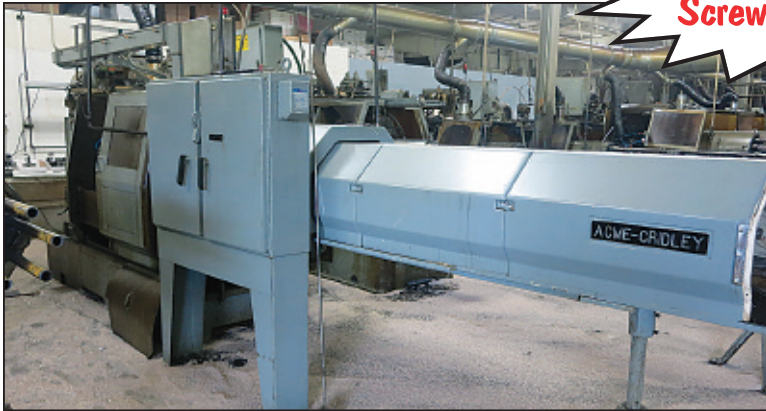
**SALE DATE: Wednesday, October 19, 2016 10:00am EDT**



# ACME GRIDLEY AUTOMATIC SCREW MACHINES



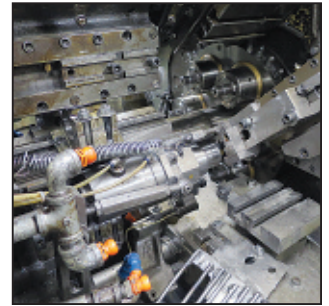
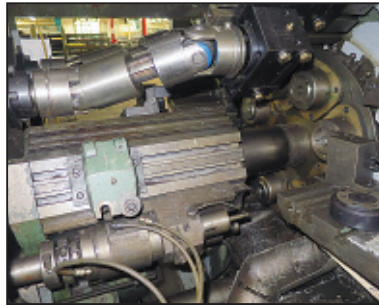
**60  
ACME GRIDLEY  
Screw Machines**



**935 Anderson Road Litchfield, Michigan 49252**



# ACME GRIDLEY AUTOMATIC SCREW MACHINES



## DAVENPORT AUTOMATIC SCREW MACHINES



## SCREW MACHINE TOOLING



**TONS of Tooling**

**SALE DATE: Wednesday, October 19, 2016 10:00am EDT**



# BROTHER CNC DRILL & TAP MACHINING CENTERS



**New  
2013 or  
2012**



**(4) BROTHER TC-R2B CNC Drill & Tap Centers,** New 2013 or 2012, with (2) 12" x 24" Pallets, 16.5" X, 12.6" Y, 12" Z, 10,000 RPM, Tapping Max. 6000 RPM, #30 Taper, 2000 IPM Rapid, 14 Station Tool Turret, 16 HP, Coolant thru Spindle (S/N 112372 Only), Hydraulic Clamping Universal Parts Fixtures (sold separately), Brother B00 CNC Controls S/Ns 112372, 111760, 112059, 112065 (2012)



**New  
2008 or  
2006**



**(2) BROTHER TC-R2A CNC Drill & Tap Centers,** New 2008 or 2006, with (2) 12" x 20" Pallets, 16.5" X, 12.6" Y, 10.6" Z, 10,000 RPM, Max. Tapping 6000 RPM, #30 Taper, 1200/2000 IPM Rapid, 14 or 26 Position ATC, Coolant System, Hydraulic Clamping Universal Parts Fixture (sold separately), Brother A00 CNC Control S/Ns 112228 (2008), 111895 (2006)



**◀ BROTHER TC-32B-QT CNC Drill & Tap Center,** New 2004, with (2) 23.5" x 16.7" Pallets, 21.7" X, 15.7" Y, 16.3" Z, 6000 RPM, #30 Taper, 10 HP, 26 Position Tool Changer, Coolant System, Air/Hydraulic Clamping Fixture (sold separately), Brother A00 CNC Control S/N 1113569

## **BROTHER TC-32A CNC Drill & Tap Center, ▶**

New 2002, with (2) 21.5" x 14" Pallets, 17.7" X, 12.6" Y, 16" Z, 12,000 RPM, 7.5 HP, 26 Position Tool Changer, Coolant System, Air/Hydraulic Clamping Fixtures (sold separately), Brother A00 CNC Control S/N 111799

## **ALSO AT AUCTION:**

**BROTHER TC-324 CNC Drill & Tap Center,** with (2) 12" x 20" Pallets, 19.5" X, 12.6" Y, 10.6" Z, 10,000 RPM, 7.5 HP, #30 Taper, 10 Position Tool Changer, Coolant System, (2) Hardinge 5C Collet Indexers with Controls (sold separately), Brother CNC Control S/N 111293

**BROTHER TC-229 CNC Drill & Tap Center,** with 12" x 24" Table, 19" X, 14" Y, 10.6" Z, 10,000 RPM, #30 Taper, 14 Position Automatic Tool Changer, Coolant System, Brother CNC Control S/N 112433



**935 Anderson Road Litchfield, Michigan 49252**



# OMNITURN CNC GANG TYPE TURNING CENTERS



**OMNITURN GT-75 Series III 2-Axis Gang Type Turning Center**, New 2011, C-Axis, 5C Collet Nose, 5 HP Spindle, 12" X-Axis, 9" Z-Axis, 4000 RPM, 6" x 14" Tool Plate, Live Tooling, Generation 4 CNC Control, Yaskawa Drives, S/N 454PT.4560G4Y

**(3) OMNITURN GT-75 Series I & II 2-Axis Gang Type Turning Centers**, New 2002, 2000 & 1998, 5C Collet Nose, 5 HP Spindle, 12" X-Axis, 9" Z-Axis, 4000 RPM, 6" x 14" Tool Plate, Generation 3 CNC (Updated) S/Ns 3133.359OG35AHM, 3630.3235G625AHB, 4000PT.273OG35

## 3-STAGE PARTS WASHING SYSTEM



### PAINTER DESIGN & ENGINEERING

#### 3-Stage Rotating Basket Stainless Steel Parts Washing System:

*Iso-Clean Wash System will remove chips, turnings and oil from turned parts in minutes using aqueous solutions.*

**Stage 1 Wash:** 500 Gallon Tank, 7-1/2 HP Pump, Stainless Steel Spray, Belt Type Oil Skimmer

**Stage 2 Heated Rinse:** 500 Gallon Tank, 7-1/2 HP Pump, Stainless Steel Spray

**Stage 3 Heated Blow-off:** 20 HP Blower

6-Basket Capacity, Basket Size 12" x 18" x 6", 125 Gallon Overflow Sump, Natural Gas Heater, PLC Controllers, 165° Max. Temp., Touch Screen Controls (New Cost \$135,000)

**ALSO: VAPOR ENGINEERING**  
Vapor Degreaser Model BACT-36A  
Spray Degreaser

## BROACHES



**5 Ton MILES Broach**  
Model MBLD10-36-120R,  
36" Stroke

**5 Ton MILES Broach**  
Model ML10-24-120R,  
24" Stroke

**4 Ton B&H Astro Broach**  
Model ABV-24, 24" Stroke

## CHIP SYSTEM



**INTERSOURCE**  
**Chip System**  
including  
CAG200E  
Chip Spinner,  
Pneumatic  
Discharge  
Load Conveyor,  
Chip Crusher  
S/N 5107710



## SECONDARY OPERATION



**UNIVERSAL AUTOMATIC AD**  
Opposed Spindle Drill

**ALSO: (2) Rotary Transfer Machines**

**SALE DATE: Wednesday, October 19, 2016 10:00am EDT**



## MIST COLLECTORS



(4) AERCOLOGY  
Model MIDVHC9000  
Oil Mist Collectors,  
9000 CFM

**SALE DATE:**  
**Wednesday**  
**October 19**  
**10am EDT**

## INSPECTION EQUIPMENT



◀ **WITNESS**  
**Visual Inspection System,**  
**Series 150:**  
*Sorts for Overall Length,  
Presence of I.D. & O.D. Threads,  
Damage to Parts.*  
(7) Cameras (all upgradable),  
PC Touch Screen

### KEYENCE IM-6120 ▶

**Image Dimension Measurement System,**  
New 2014 (Non-Contact), Repeatability .004 mil,  
Fast & Easy System, Auto Location/Orientation Adjust,  
Automatic Focus, Statistical Analysis,  
(3) Types of Illumination, Data Management,  
Field of View 100mm Diameter x 200mm  
with IM-6600 Controller S/N 6C413055



**New  
2014**

## MACHINE SHOP



### Machine Shop Equipment including:

(4) Sundstrand Rigid Mills, Hendey Engine Lathe,  
Royal Oak Form Relief Grinder,  
K.O. Lee Surface Grinder, Acer Surface Grinder,  
Schmidt CNC Marking Machine,  
Acer 3 HP Vertical Mill, Hardinge HC Chucker,  
Reid 2C Surface Grinder, Flex Arm Tapper,  
G&L and Darex Drill Grinders, Drill Presses



**TESA M350+ Micro-Lite Digital Height Gauge 16" DARCEY 16H Optical Comparator**

**Inspection Equipment including:** Indicators, Thread Gauges, Gauge Stands, Surfometer,  
Micrometers, Inspection Plates, Jo Blocks, Pin Gauges, Hardness Testers, etc.

## FACTORY EQUIPMENT



### Factory Equipment including:

(2) Gardner Denver Air Compressors - 50 & 75 HP,  
4800 lb. Clark Forklift, Pallet Jacks, Floor Cleaners,  
Coolant Recovery Sump Sucker, Pallet Racks, etc.



## BAR STOCK INVENTORY



**150,000 lbs.  
Bar Stock**

**Approx. 150,000 lbs. Raw Material Bar Stock Inventory**  
including Brass, Steel & Aluminum Round & Hex  
(see lots for descriptions)

**See Complete Auction Terms & Conditions On Our Website – [www.premierarg.com](http://www.premierarg.com)**

**935 Anderson Road Litchfield, Michigan 49252**

# GIGANTIC SCREW MACHINE AUCTION

60 ACME GRIDLEYS • 10 BROTHER CNC DRILL & TAP CENTERS • TOOLING



On the Premises of:

**Gonzalez Group, LLC**

935 Anderson Rd. Litchfield, Michigan 49252

**Onsite & Webcast Auction**

**SALE DATE: Wed. October 19 at 10:00 am EDT**

**INSPECTION: Tues. Oct. 18 8am - 5pm EDT**



77 East Palatine Road  
Prospect Heights, IL 60070

[www.premierarg.com](http://www.premierarg.com)

in conjunction with:



PRESORTED  
FIRST-CLASS MAIL  
U.S. POSTAGE  
PAID  
Brainerd, MN  
Permit No. 698

# GIGANTIC SCREW MACHINE AUCTION

60 ACME GRIDLEYS • 10 BROTHER CNC DRILL & TAP CENTERS • TOOLING



On the Premises of:

**Gonzalez Group, LLC**

935 Anderson Road  
Litchfield, Michigan 49252

(60) Acme Gridley 6-Spindle & 8-Spindle Automatics • (6) 3/4" Davenport Automatics  
(10) Brother CNC Drill & Tap Centers with Pallet Changers • Intersource Chip System  
(4) Omniturn GT-75 CNC Gang Turn Lathes (one New 2011) • Broaches • Toolroom Equipment  
Inspection Equipment • 3-Stage Stainless Steel Rotating Basket Parts Washer • Material Handling  
Approx. 150,000 lbs. of Raw Material Bar Stock • Large Quantity of Screw Machine Tooling  
Thread Rollers • Shave Tools • Watkins Saws • Cams • Gears • MORE!



13  
8-Spindle  
Acmes



47  
6-Spindle  
Acmes



10 Brother  
Drill/Tap

Buyer's Premium: 15% On Site, 18% Webcast